

Manual
Universal Scanner Audio Player
Version 3.0.0.1

Contents

1. Foreword
2. How it works
3. Main view
 - 3.1. File menu
 - 3.2. Filter menu
 - 3.3. Export menu
 - 3.4. Settings menu
 - 3.5. Favorite Folders menu
4. Column Header Menu
5. Right click on Table row Menu
6. Parsing Library
7. How to speed up the program.
8. Proposals for cooperation

Foreword

This program was written by Eldar Nizamutdinov aka Deim. It is written in C# language.

How it works

Program work with files or with directories. Users can select file or directory, then program send it to the parsing engine. Parsing engines search all files in selected folder and subfolders by extension criteria *.wav and *.au files. All paths of founded files saved into memory and pass to the next separate engine. This engine separate files by scanner type and extract information from files into memory. It works on multithread mode. See chapter 6. Information that extracted from files not saved on your local disk; it is stored only on RAM memory in special list.

Main View

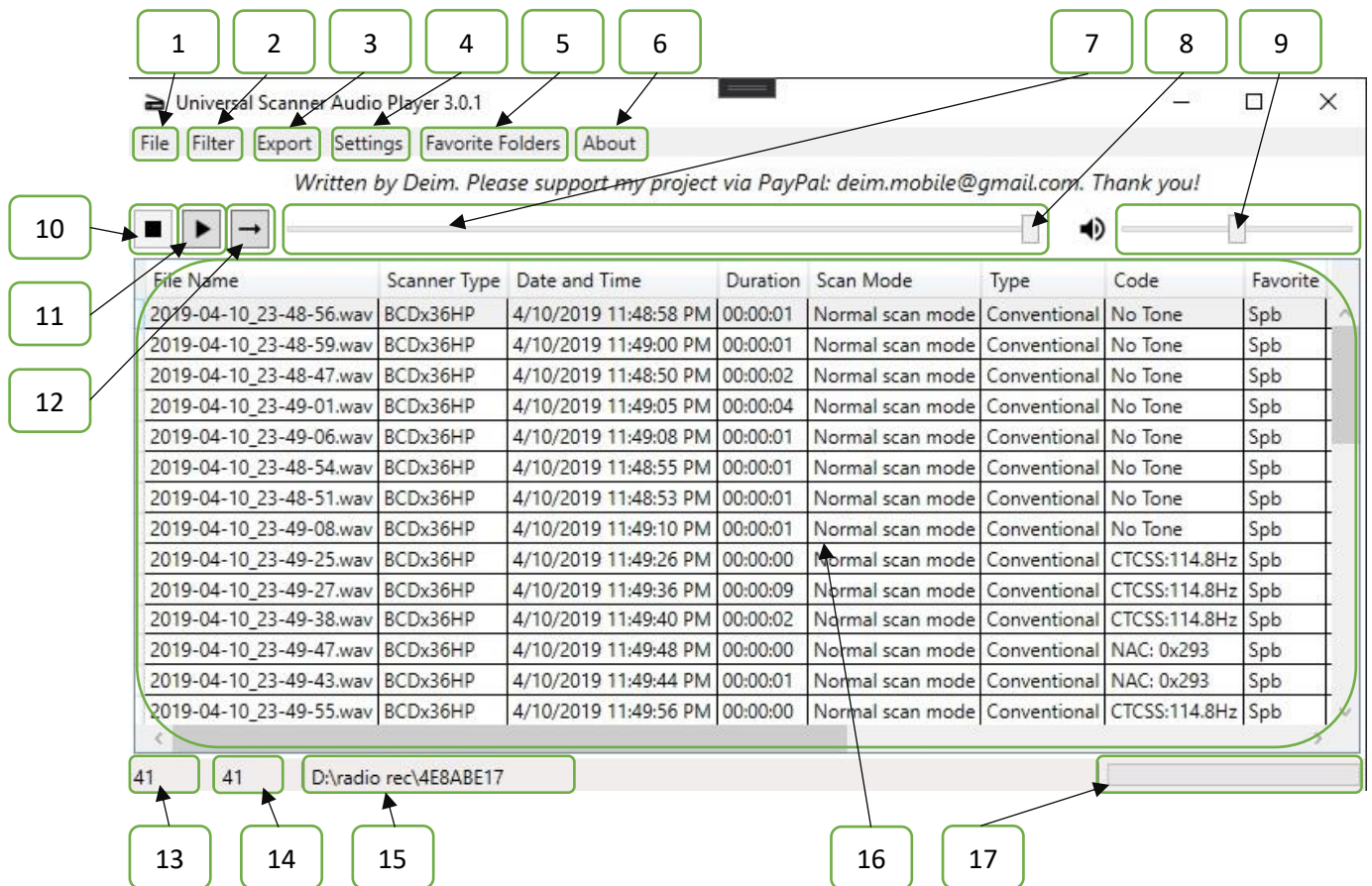


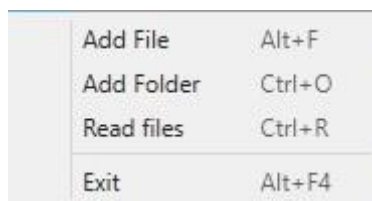
Fig. 1

Main view, as you can see on Fig.1, contains main controls and menu. Lets quickly look all main controls and menu.

1. File Menu pos.1 on Fig. 1 – see chapter 3.1
2. Filter Menu pos.2 on Fig. 1 – see chapter 3.2
3. Export Menu pos.3 on Fig. 1 – see chapter 3.3
4. Settings Menu pos.4 on Fig. 1 – see chapter 3.4
5. Favorite Folders Menu pos.5 on Fig. 1 – see chapter 3.5
6. About Menu pos.6 on Fig. 1 – Here you can find this Help and can read About this program.
7. Scrollbar - with this scrollbar you can see playback progress and, if it nessasery, **you can seek playing file by drag and the pointer(8)** .
9. Pointer
10. Volume – current file playback volume.
11. Stop button. **Shortcut – “S”**
12. Play and Pause button. It can toggle between play and pause. **Shortcut – “P”**
13. Play one track or play all track one by one. **Shortcut – “R”**
14. Total supported files in Table view

15. Total records in Table view. This value can be different then value in pos. 13 in cases with AOR audio files.
16. Current working directory. Last working directory saved into settings file and can be opened quickly after program started.
17. Main table view.
18. Load progress bar. Show loading process, deleting process and copying process.

File menu



Add File	Alt+F
Add Folder	Ctrl+O
Read files	Ctrl+R
Exit	Alt+F4

Fig. 2

- Add File **Shortcut** – “**Alt+F**”. You can add to the program any supported single file. *This can be useful with AOR wav files. When each audio file can contain a lot of voice records.*
- Add Folder **Shortcut** – “**Ctrl+O**”. You can add any folders with audio supported audio records.
- Read files **Shortcut** – “**Ctrl+R**”. This menu item is enabled only when Current working directory not empty. *This is useful for quick start. After application start you can just press **Ctrl+R** last loaded directory load again.*

Filter menu

Shortcut – “Ctrl+F”.

First of all, how filtering process work. When you press “Search” button, all saved into memory information from files pass to the filtering engine. After filtering process, the program creates another list with files information and pass it to the Main table view. After every press to the Search button this process will be repeated. Filtering process work with all files list every time and create new filtered list. Old, filtered list will be removed from memory.

When you close filter window, all filtered results will be removed, and Main table window show you previous unfiltered file list.

Filters are of two types. Exact and non-exact. Exact filter search exactly that you search. Non-exact will find all value which contains searched symbols. Example: if you search by frequency 172.800 – program will find only files with this frequency. This is how to work exact filter. If try to search Favorites and type in text box “Sp” program will find all favorites that contain “Sp” – Spain, SpongeBob, SPB etc.

The image shows a software interface titled "Filter" with a search icon and a close button (X). It contains two columns of filter fields, each with a clear button (X). The fields are numbered 1 through 23. The first column includes File Name Filter (1), Scanner Type Filter (2), Date and Time Filter (3) with a date picker showing "15", Scan Mode Filter (4), Type Filter (5), Frequency Filter (6), Code Filter (7), Favorite Filter (8), and System Filter (9). The second column includes Department Filter (11), Channel Filter (12), Site Filter (13), TGID Filter (14), and UID Filter (15). Below these are three range filters: Frequency range, Mhz (16) with Min (19) and Max fields; Date range (17) with Start (20) and End date pickers; and Duration range, ms (18) with Min (21) and Max fields. At the bottom are a "Search" button (22) and a "Reset Filter" button (23).

Fig. 3

1. File Name Filter – case insensitive file name filter.
2. Scanner Type filter - case insensitive scanner type filter.
3. Date and time filter – search by date only. May work with extended date filter 20 on Fig. 3
4. Scan mode filter – case insensitive scan mode filter.
5. Type filter – case insensitive type filter.
6. Frequency filter – Exact filter by frequency in range 0 - 2500Mhz. May work with extended frequency filter 19 on Fig. 3. This is exact filter
7. Code filter – case insensitive code filter.
8. Favorite filter – case insensitive favorite filter.
9. System filter – case insensitive system filter.
10. Clear filter button. Each filter has clear button to fast clear filter value.
11. Department filter – case insensitive department filter.
12. Channel filter – case insensitive channel filter.
13. Site filter – case insensitive site filter.
14. Tgid filter – filter by TGID. This is exact filter
15. Uid filter – filter by UID. This is exact filter
16. This is check box for extended frequency filter. If it checked base frequency filter will be disabled.
This filter helps you to search frequency in range.
- Next Extended Date filter helps you search records in date range.
- Duration filter – sometimes these is needed to find long voice records or vise versa very shot records.

Useful tip – you can search very short voice records in all your files and delete them. In short records less than 500 msec you cannot hear anything useful.

22. Search button – apply filter and send filtered file list to the main table view.

23. Reset filter - clear all filter value and send to the main table view unfiltered file list.

Export

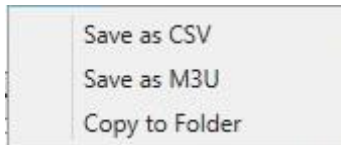
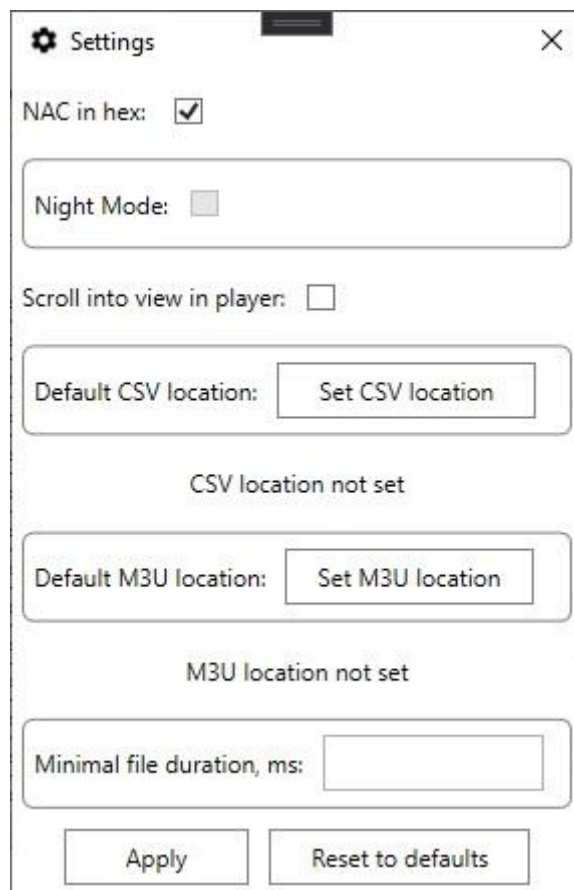


Fig. 4

- Save as CSV. Save information from all files in current main table view in csv file. Save all columns whether column hide or visible.
If in settings, you will set default csv location, program will open this folder for save file.
If it not set – program open My Documents folder.
If file with same name exist in selected folder, it will be removed before saving new.
- Save as M3U – Save information from all files in current table view in m3u playlist file. If in settings, you will set default m3u location, program will open this folder for save file.
If it not set – program open My Documents folder.
If file with same name exist in selected folder, it will be removed before saving new.

NOTE: AOR wav file will not export to the m3u!

Settings



- Nac in hex – if this check box checked all NAC in main table view will show as hex value
- Night mode – note finished yet.
- Scroll into view in player – if this check box checked player in playing all files mode will automatically scroll down to current playing file.
This may be useful if you only listen files and may interrupt you in other case.
- Default CSV location – default folder for save exported csv files
- Default M3U location – default folder for save exported m3u files.
- Minimal file duration - it is another method to prevent loading useless short audio files in main table view. It work on main load process and drop file with duration less then set in this setting.

Favorite Folders

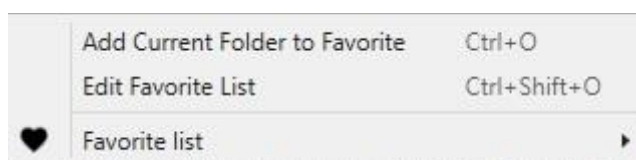


Fig. 5

- Add current folder to favorite – if current working folder exists you can add it to favorite list. **Shortcut – “Ctrl+O”**. After pressing the Add current folder to favorite menu you will see window for adding Alias for new directory:

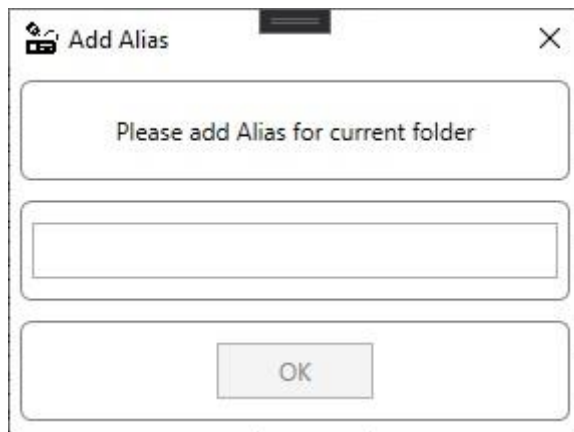


Fig. 6

- Edit Favorite List see Fig.7 **Shortcut – “Ctrl+Shift+O”**– if current favorite list does not empty you can edit it.
Add folders to favorite and remove them.
For adding folder press “Add folder to Favorites” button, set Alias, select directory and press “Add”
For deleting folder just select them in list and press “Remove from favorite” button.

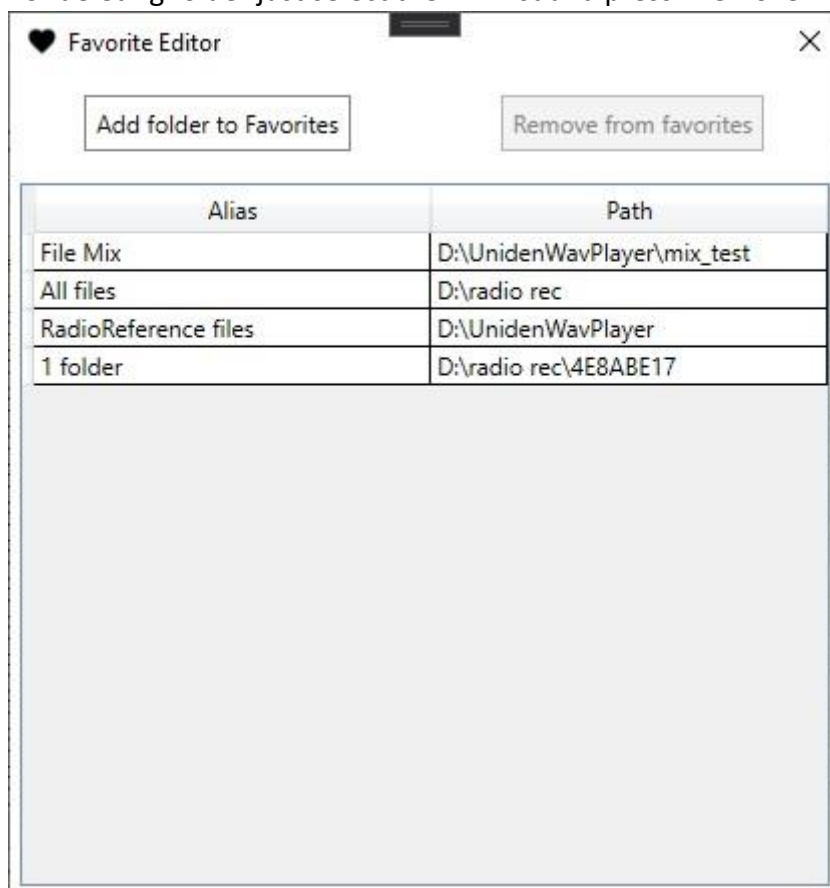


Fig. 7

- Favorites list – favorite list look like this:

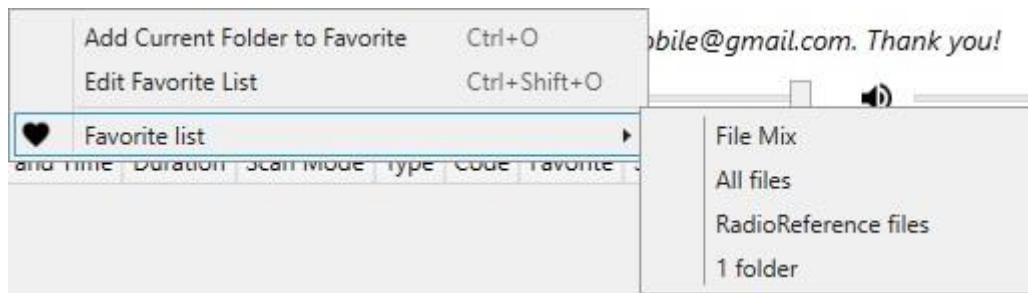


Fig. 8

About

- Here you can find this help.

Column Header Menu

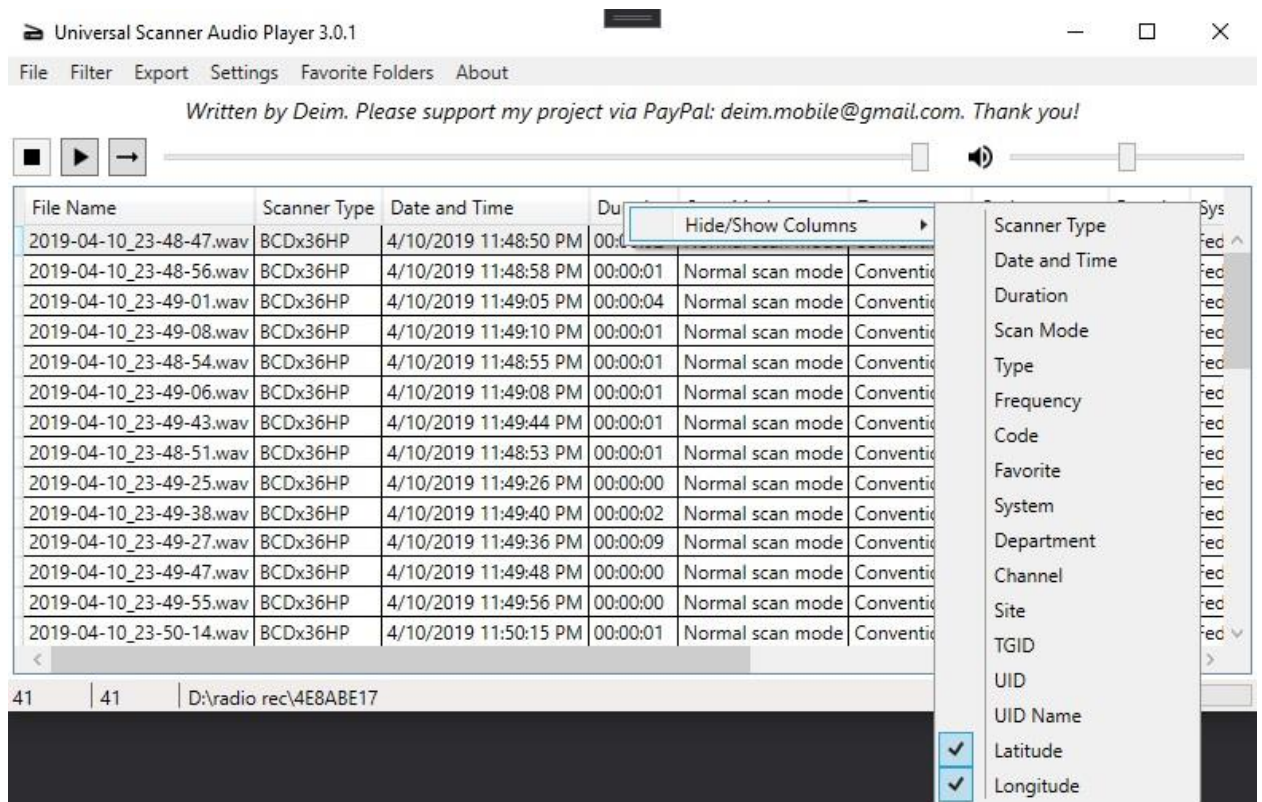


Fig. 9

Click on the column header to see this menu. If you want to hide any column you will just check them.

Right click on Table row Menu

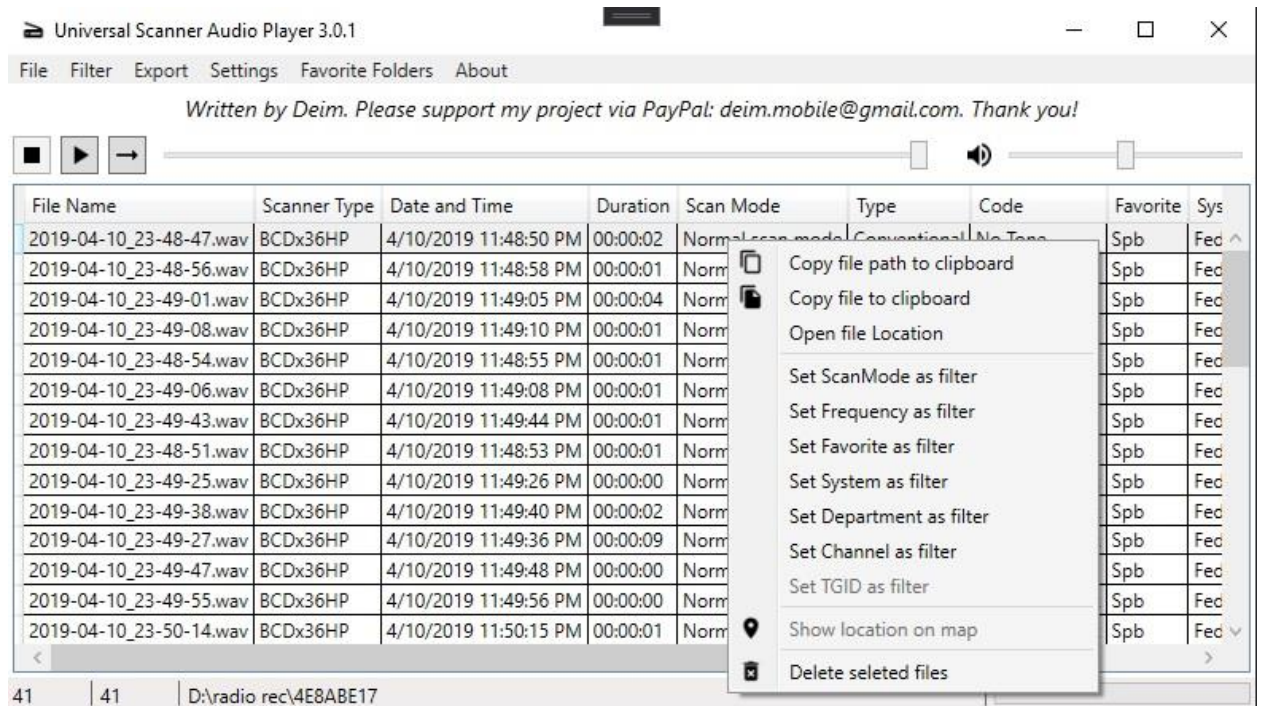


Fig. 10

- Copy file path to clipboard – copy current selected file path to clipboard.
- Copy file to clipboard – copy current selected file to clipboard.
- Open file Location – open current selected file location.
- Set Scan Mode as filter – if current selected file scan mode does not empty then open filter window and set scan mode as filter. If filter window already opened – just set value as filter.
- Set Frequency as filter – same as Set Scan Mode as filter
- Set Favorite as filter – same as Set Scan Mode as filter
- Set System as filter – same as Set Scan Mode as filter
- Set Department as filter – same as Set Scan Mode as filter
- Set Channel as filter – same as Set Scan Mode as filter
- Set TGID as filter – same as Set Scan Mode as filter
- Show location on map – if current file contains GPS position you can see this position on Google maps on your browser.
- Delete selected files – if you select one ore more file you can remove it by pressing this menu item.

Parsing Library

Universal Scanner Audio Player use 5 parsing libraries. All of them developed by me (Deim). Currently all libraries have different depth of work.

- AOR DV-10 parsing library – most difficult of them. It developed without any technical info from manufacturer. To complicate matters, that I haven't AOR DV10 scanner and i can't testing all type of records. Perhaps some type of recordings can't parse in early versions. If you find some files which cannot be parsed by the program or parsed with mistakes, please let me know.
- Home Patrol parsing library – almost the same as Uniden 436/536/SDS100/SDS200 library
- ICOM R30 parsing library - new library for me. It is not difficult as AOR lib. It developed without any info from manufacturer too.
- Uniden parsing lib – my oldest lib. It developed without any info from manufacturer too.
- Whistler parsing lib – One of 5 manufacture which have official wav files structure info. Thanks so much, Whistler!

How to speed up the program.

For fastest load file int the program you may add folder with your scanner records to the exceptions of your anti-virus software or to the windows defender exceptions.

Proposals for cooperation

If you want to add new type of files to this program, please let me know. You can write to me in RadioReference forum or directly on my email.

Or maybe you have interesting idea, and you need programmer for realization of the project. Let me know too)))